

SHORT QUIZ No.1 Part 1

Take the time to answer the questions in this short quiz.

1. Write the 7 Letters of the music alphabet: _____.

2. Write the Treble Clef at the beginning of the music staff below then write all the notes in the spaces using a quarter note. Remember to follow the rule on stem direction and position.

3. Write the Treble Clef at the beginning of the music staff below then write all the notes on the lines using a quarter note. Remember to follow the rule on stem direction and position.

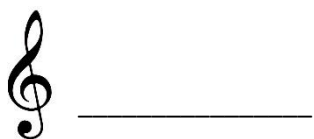
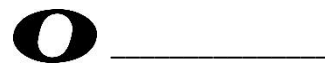
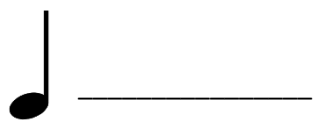
4. Write the Treble Clef at the beginning of the music staff below then write all the notes on the lines and in the spaces using a quarter note. Remember to follow the rule on stem direction and position.

5. Write the Bass Clef at the beginning of the music staff below then write all the notes in the spaces using a quarter note. Remember to follow the rule on stem direction and position.

6. Write the Bass Clef at the beginning of the music staff below then write all the notes on the lines using a quarter note. Remember to follow the rule on stem direction and position.

7. Write the Bass Clef at the beginning of the music staff below then write all the notes on the lines and in the spaces using a quarter note. Remember to follow the rule on stem direction and position.

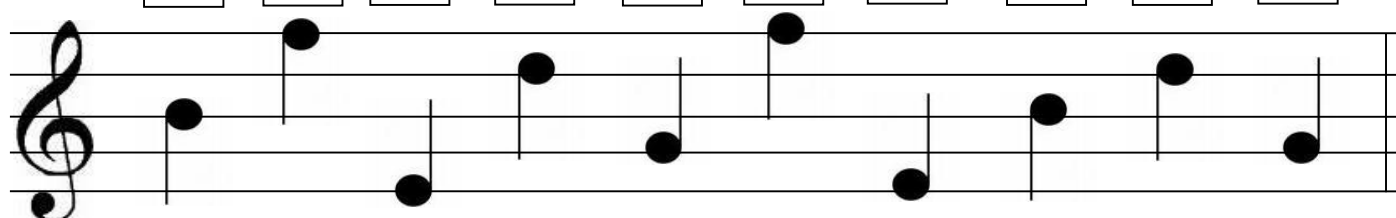
8. Write down on the space provided below the name of the following music symbols:



SHORT QUIZ No.1 Part 2

1. The notes below are written on the lines of the treble staff in random order. Write the name of each note in the box above the note.

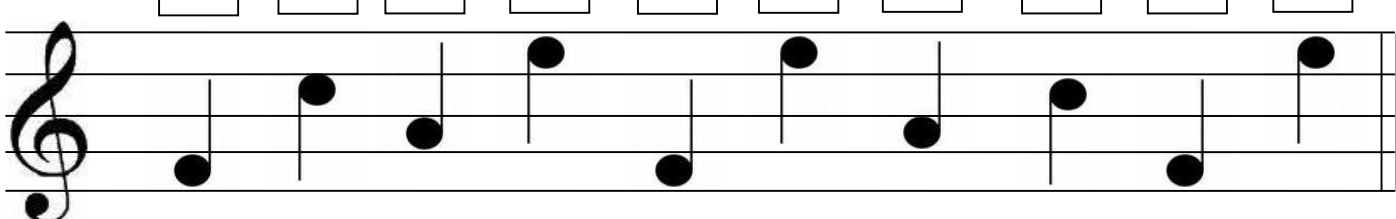
□ □ □ □ □ □ □ □ □ □



A treble clef staff with ten notes placed on the lines. From left to right, the notes are: G4 (first line), A4 (second line), C5 (third line), D5 (fourth line), E5 (fifth line), G4 (first line), A4 (second line), C5 (third line), D5 (fourth line), and E5 (fifth line).

2. This time the notes are written in the spaces of the treble staff in random order. Write the name of each note in the box.

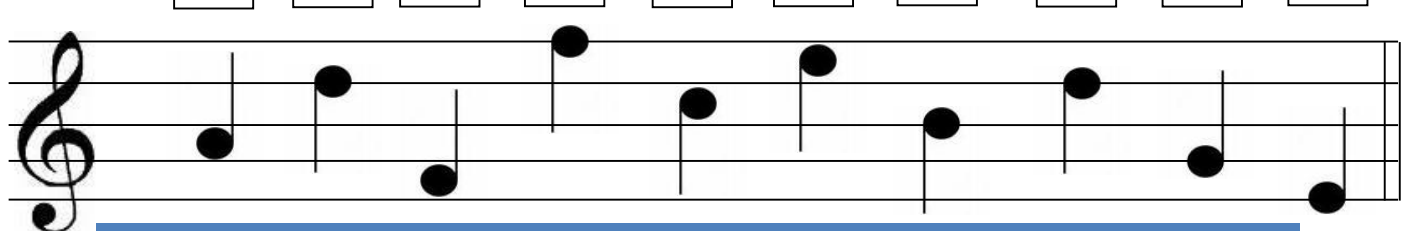
□ □ □ □ □ □ □ □ □ □



A treble clef staff with ten notes placed in the spaces. From left to right, the notes are: F4 (first space), G4 (second space), A4 (third space), B4 (fourth space), C5 (fifth space), D5 (first space), E5 (second space), F4 (first space), G4 (second space), and A4 (third space).

3. Now the notes are written both on the lines and in the spaces of the treble staff. Write the name of each note in the box.

□ □ □ □ □ □ □ □ □ □

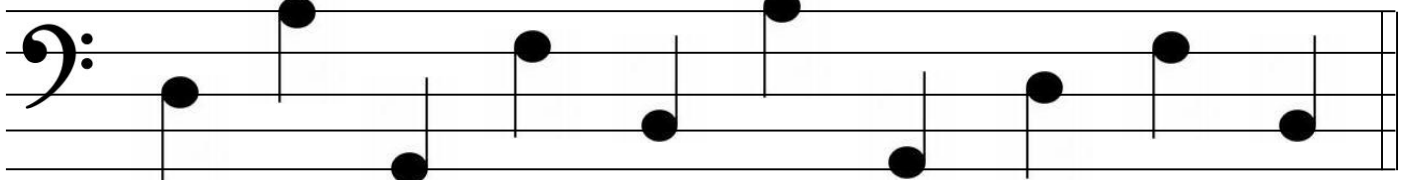


A treble clef staff with ten notes placed on both lines and spaces. From left to right, the notes are: G4 (first line), A4 (second space), B4 (third line), C5 (fourth space), D5 (fifth line), E5 (first space), F4 (second space), G4 (third line), A4 (fourth space), and B4 (fifth line).

SHORT QUIZ No.1 Part 3

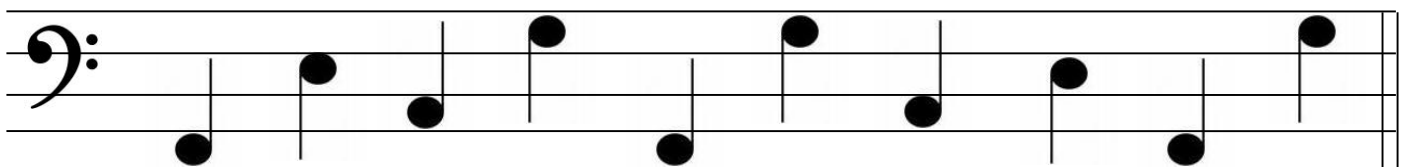
1. The staff below contains all the notes on the lines of the bass staff in random order. Write the name of each note in the box above the note.

□ □ □ □ □ □ □ □ □ □



2. This time the notes are written in the spaces of the bass staff in random order. Once again write the name of each note in the box.

□ □ □ □ □ □ □ □ □ □



3. Now the notes are written both on the lines and in the spaces of the bass staff. As before, write the name of each note in the box.

□ □ □ □ □ □ □ □ □ □

